

CITIZEN

Advance to the pole position

High speed printing with unique ease of use



CT-S851II
(available in black or white)

LCD display

The industry's first POS printer with LCD display for easy configuration and operation. Many set up options and coloured status or error messages.

In a hurry?

With 300mm/sec. print speed the CT-S851II is the fastest POS printer in the market.

Toolfree maintenance

Paper jam? No problem for the CT-S851II. One hand grip and the cutter is released automatically. No tool is needed. Even if the long-life cutter ever needs to be exchanged. Thanks to its Snap-In design this only takes 30 seconds.

Internal Power Supply

The CT-S851II POS printer from Citizen offers an internal power supply.

CITIZEN CT-S851II

POS

Applications

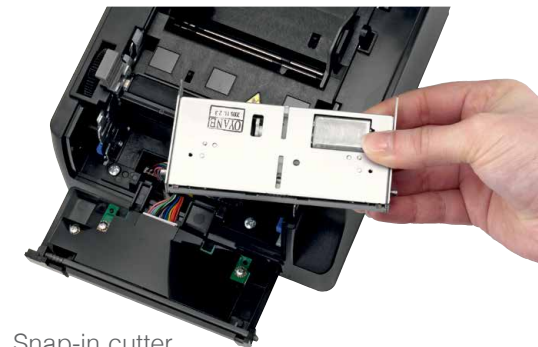
- Hospitality
- Receipt
- Coupon
- Ticket
- Restaurant / Bar
- Kitchen
- Delivery slip
- Barcode
- Weigh scales
- Kiosk
- Queue management



Online status



Error message with instruction



Snap-in cutter

CITIZEN

Specifications

Model		CT-S851II
Printing method		Line thermal dot printing
Printing width		280mm/640 dots, 72mm/576 dots, 64mm/512 dots, 54.5mm/436 dots, 54mm/432 dots, 52.5mm/420 dots, 48mm/384 dots, 45mm/360 dots, 48.75mm/390 dots, 68.25mm/546 dots
Dot pitch		8 x 8 dots/mm (203 dpi)
Printing speed		Max. 300mm/s (print density 100%), 2400 dot-lines/s
Number of columns		83mm paper: Font A – 53, Font B – 71, Font C – 80, 80mm paper: Font A – 48, Font B – 64, Font C – 72, 60mm paper: Font A – 36, Font B – 48, Font C – 54, 58mm paper: Font A – 35, Font B – 46, Font C – 52
Character size		Font A: 1.50 x 3.00mm (12 x 24 dots), Font B: 1.13 x 2.13mm (9 x 17 dots), Font C: 1.00 x 2.00mm (8 x 16 dots)
Character table		Alphanumeric, international, PC437/850/852/857/858/860/863/864/865/866/WPC1252/katakana/Thai code 18
Barcode type		UPC-A/E, JAN-13/8, Code 39, Code 128, CODABAR, Code 93, PDF417, QR Code
Logo registration/print		384 KB (capable of storing user-defined characters and logos)
Line spacing		4.23mm (1/6 inch), can be set by command
Paper	Width	83mm/80mm/60mm/58mm (all +0/-1mm)
	Diameter	maximum 83mm
	Thickness	65-75µm (core tube diameter: inner 12mm/outer 18mm) 75-150µm (core tube diameter: inner 25.4mm/outer 32mm)
	Recommended Paper	TF-50KS-E-2D from Nippon Paper, PD150R or PD160R from Ohji Paper, PA220AG, HP220A, HP220AB-1, F230AA, P220AB, or PB670 (2-color paper) from Mitsubishi Paper
Interface		Serial (RS-232C compliant), parallel (IEEE 1284 compliant)), USB, USB with hub, Ethernet, Wireless LAN (Wifi), powered USB, Bluetooth
Input buffer		4K bytes/45 bytes
Drawer kick-out		2 drawers
External device port		RJ-45, 8-pin connector
Liquid crystal display (LCD)		128 x 32 dots STN liquid crystal, white/red LED backlight
Power supply		Input: AC 100 to 240V, 50/60 Hz, 150 VA, Output: DC 24, 2.1 A
Weight		CT-S851IIS: Approx. 2 kg, CT-S851IIA: Approx. 1.6 kg
Dimensions (W x D x H)		CT-S851IIS: 145 x 192 x 148 mm, CT-S851IIA: 145 (W) x 192 (D) x 120 (H) mm
Operating environment		5 to 45°C, 10 to 90% RH (no condensation)
Storage environment		-20 to 60°C, 10 to 90% RH (no condensation)
Reliability		Print head life: 150km, 200 million pulses (at normal temperature and humidity using recommended paper), Auto cutter life: 2 million cuts (at normal temperature/humidity, using recommended paper and paper thickness)
EMC and safety standards		UL, C-UL, FCC Class A, TUV-Bauart, CE Marking, VCCI, CCC, BIS
Warranty		2 years for Printer

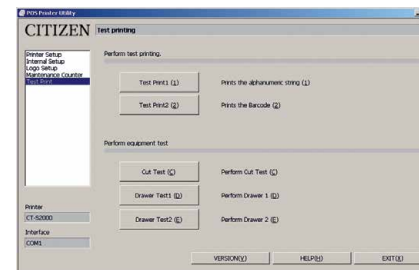
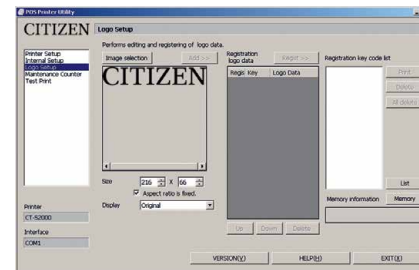
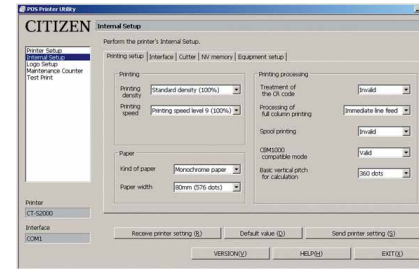
Accessories/ Interface Connections

- Serial IF1-RS01
- Parallel IF1-PA01
- USB IF1-UB01
- Powered USB IF1-PU01
- USB incl. USB hub IF1-HU01
- Ethernet (Standard) IF1-ET01



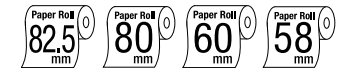
Exchangeable interfaces plus RJ-45 port

Customization Software



CITIZEN CT-S851II

POS



Features & Benefits

- 300mm / sec high-speed printing
- 82,5/80/60/58 mm selectable paper width
- Easy paper loading
- Auto retracting Cutter (full/partial)
- Snap-in cutter
- LCD display
- Built-in buzzer
- Front paper exit
- Splash proof design
- Paper roll capacity Ø 83mm
- Exchangeable interface cards
- RJ-45 port
- Built-in AC adaptor
- Cash drawer kick-out
- Bitmap registration (NV memory)
- Barcode printing
- ESC/POST™/® compatibility
- Page mode
- Two color printing
- Smoothing fonts
- Available in white, black or dark grey (option)
- Driver: Win2000/XP/Vista/2003 Server, OPOS, Java POS, CUPS
- Utility software: Printer customization software, Receipt Layout Designer

All product names are trademarks of the respective manufacturers. Epson® and ESC/POST™® are trademarks or registered trademarks of Seiko Epson Corporation. Designs, specifications and availability are subject to change without notice. Errors and omissions excluded.

Type Classification

CT-S851IIS 3 RS E BK P L M1
1) 2) 3) 4) 5) 6) 7) 8) 9)

1) Model type

CT-S851II

2) Power supply

DC: No power source
S: Built-in power supply type
A: AC adapter type

3) Paper width

3: 3 inch (80/83 mm)
2: 2 inch (58/60 mm)

4) Interface

PA: Parallel
RS: Serial RS-232C
UB: USB only
UH: USB with hub

5) Market:

J: Japanese
E: Europe/Asia
U: North America
C: China

6) Body case color

WH: White
BK: Black
GR: Gray

7) PNE sensor

No
P: PNE sensor

7) Label

No
L: Label type

6) Black Mark sensor

No
M1: Left side
M2: Right side